

## Shades of sustainability

### U.S. Green Building Council (USGBC) Headquarters

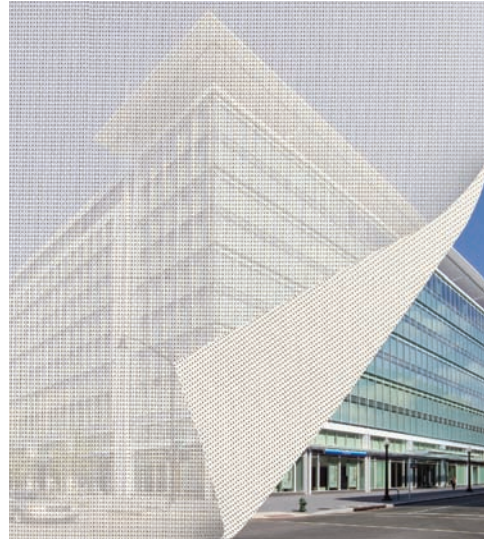
The USGBC developed the LEED® (Leadership in Energy and Environmental Design) Green Building Rating System™. The organization is the preeminent international sustainable-building association.

Its headquarters in Washington, D.C.:

- became the first LEED® Platinum building of LEED® 3.0.
- has set the standard of sustainable design.
- showcases today's most sustainable building products and energy-efficient systems.

### MechoShade Systems' contribution

- SolarTrac®, the elite WindowManagement® system, automatically adjusts the roller shades in the headquarters' windows to control the daylighting. It minimizes the need for artificial lighting and reduces energy costs.
- EcoVeil® Shadecloth, a component of the SolarTrac® system, provides protection for the employees from excess glare while providing a view to the outside.



U.S. Green Building Council Headquarters, Washington, D.C., WDG Architecture, Photo: Larry Olsen

## MechoShade Systems LEED® documents

### Achieving Building Certification

LEED® cut sheets are available, which focus on:

- new construction, core and shell, schools
- commercial interiors

The documents help architects, designers, and LEED® Accredited Professionals reach their building-certification goals.

Click [here](#) for PDFs of the documents.

For hard copies, send an e-mail clearly stating your request to [samples@mechoshade.com](mailto:samples@mechoshade.com)

